

# EDDINGTON SCHOOL NEWS

**CALENDAR**

**LUNCH  
MENU**

**ANNOUNCEMENTS**

**BIRTHDAYS**

**PRINCIPAL'S CORNER**

**Click Here**

**CONTACT US**







# Announcements



**Dismissal:** Please notify the office and your child's teacher of any dismissal changes BEFORE 2:00 pm (except in cases of emergencies). This helps us get everyone home safely!



**Lost & Found:** We have many, many items in our Lost & Found: hats, mittens, gloves, coats, snow pants, one sneaker, one boot, and the list goes on! Any parent is welcome to take a look at what we have, just give the office a call 😊

## Winter Clothes

It's that time of year to send in winter weather gear with your child: Hats, mittens/gloves, jackets, snowpants, and boots. Also, if children wear their boots to school, please send in other shoes for them to change into, so they will be comfortable during the school day.

**REGISTER NOW**

**The Eddington School is currently accepting PreK and Kindergarten enrollment/registration paperwork. Children must be 4 years of age by October 15, 2025.**

**Registration forms can be found on the RSU #63 website ([www.rsu63.org](http://www.rsu63.org)) or can be picked up at the Eddington School.**

**SHOOTING STARS BASKETBALL**

**KINDERGARTEN TO 2ND GRADE**

**March 10th to April 9th 2025**  
**Mon & Wed 5:30 - 6:30**  
**Holbrook Gymnasium**

For more info, Call Brent @ 207-949-6769  
or visit [www.holbrookrec.com](http://www.holbrookrec.com)

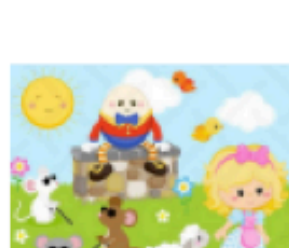
## Read Across America Week March 3rd- 7th

Please join Eddington Elementary as we celebrate reading.



**Monday- The Cat in the Hat**

**Hat Day- Wear your favorite Hat to school**



**Tuesday- Nursery Rhyme Day**

**Dress up as a character from a Nursery rhyme**

**Wednesday- Pete the Cat**

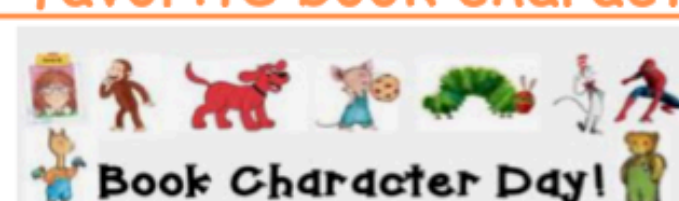
**Dress in BLUE**



**Thursday- Fancy Nancy**

**Dress all "Fancy" for School**

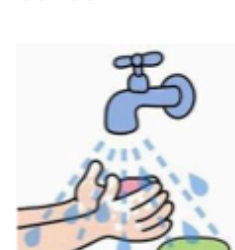
**Friday- Dress as your favorite book character**



### When should I keep my child home?

Please keep your child home if they experience the following:

Temperature of 100.4 degrees or higher ( Your child is still contagious if you use tylenol or ibuprofen to decrease their temperature)  
Difficulty breathing, congestion or wheezing  
Vomiting  
Diarrhea (including treatment for constipation)  
Inflamed reddened eyes with or without drainage  
Open, runny sores on the skin or mouth  
Seizures, which differ from the child's normal seizure pattern  
Persistent, uncontrollable crying  
Unexplained rash



If your child develops these symptoms at school, you will be called to pick him/her up. We try very hard to limit the children's exposure to contagious diseases and appreciate your help with this.

If your child is sick, we recommend that you:

Stay home from school and other crowded places.  
Wash your hands often and cough and sneeze into a tissue.  
Get lots of rest and drink plenty of fluids.

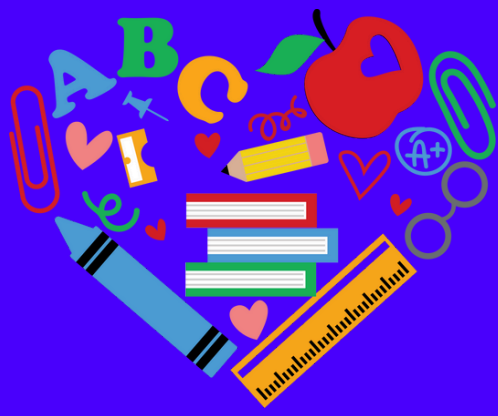
**Return to school only when you're feeling better, eating and drinking normally, no vomiting or diarrhea and you haven't had a fever (without using medication) for at least 24 hours.**



### 5 Ways to Boost Your Immune System

- 1. Get enough sleep.**  
Children need between 10-14 hours of uninterrupted sleep. Your immune system is hard at work while you are sleeping! Parents, you need 7-9 hours.
- 2. Eat more fruits, vegetables and Protein**  
Cut down on sugary drinks and snacks. Make room for nutrient rich foods.
- 3. Play more**  
Unstructured playtime is good exercise and relaxing. Stress can affect your white blood cell numbers and your ability to fight viruses and bacteria.
- 4. Get out in the Sun**  
Vitamin D3 is the sunshine vitamin and very important in immune health. Most folks who live in the north are deficient in D3. D3 supplements are a big help in the winter months.
- 5. Wash your hands**  
Make it a habit not to touch your face! Don't give viruses and bacteria a free ride.





# PRINCIPAL'S CORNER

[Newsletter Incentive](#)



February 28, 2025

## Classroom Updates

Pre-K has started a weekly winter challenge, and this week's activities included snow painting, an obstacle course, sled bowling, and more snow painting. It was also Dental Week in Pre-K!

Kindergarten is currently working on week 2 of their American symbols unit, focusing on the flag, Liberty Bell, Statue of Liberty, and Bald Eagle. They have been reading books and writing about the importance of trying their best and not giving up. Additionally, they have been learning about long vowel sounds and various ways to compose and decompose the number 10.

1st grade has had a busy week! They have started a new mission, learning about the balance of carnivores and herbivores in Etosha National Park, Africa. They've also been working on place value for numbers 1-120, adding 's' and 'es' to words and exploring how that changes their meaning. Additionally, they've read books about the Grand Canyon, wetlands, and the water cycle.

## Early Release on March 13 and No School on March 14

Please note that school will be dismissed at 12:00 noon on Thursday, March 13. Also, there is no school on Friday, March 14 (Teacher Professional Development Day).

## Planned Absences

Please contact your teacher or the office to request a Planned Absence form if your child will be out of school on a scheduled trip for 3 days or longer. Thank you!

## PreK and Kindergarten Registration is Open for 2025-2026

We are currently accepting PreK and Kindergarten enrollment paperwork. Children must be at least 4 years of age by October 15, 2025. Registration forms can be found on the District website ([www.rsu63.org](http://www.rsu63.org)) or please feel free to stop by and pick up a packet from the office.

## Eagle Stickers

A limited number of Eagle Stickers are awarded each week and students who receive a sticker are entered into a prize drawing. If your child brings home an Eagle Sticker, please help us celebrate them by asking them how they earned it! The winner of this week's drawing is: Theo Simmons.

Have a wonderful weekend!

Mrs. McLean

The newsletter word of the week: Ice





# FEBRUARY



Sunday	Monday	Tuesday	Wednesday	Thursday	Friday	Saturday
						1
2	3	4	5	6 	7	8
9	10	11	12	13	14 <i>Happy Valentine's Day</i>	15
16 	17	18	19	20	21	22 
23	24 SCHOOL BOARD MTG. AT HOLBROOK 6:30 PM	25	26	27	28	

FEBRUARY VACATION - NO SCHOOL



# MARCH



Sunday	Monday	Tuesday	Wednesday	Thursday	Friday	Saturday
2	3 	4	5	6	7 	8 PTG Family Glow Dance 3:00-5:00 pm Holden School 
9	10	11	12	13 EARLY RELEASE AT 12:00 NOON !!	14 PROFESSIONAL DEVELOPMENT DAY NO SCHOOL !!	15
16	17 <i>St. Patrick's Day</i>	18	19	20	21	22
23	24 SCHOOL BOARD MTG. AT HOLDEN 6:30 PM	25	26 Dental Clinic 	27	28	29
30 	31 Masons Brewing Co. Fundraiser for PTG 5:00 -9:00 pm					






# 2025 MARCH

## EDDINGTON ELEMENTARY SCHOOL

MONDAY	TUESDAY	WEDNESDAY	THURSDAY	FRIDAY
<b>3</b> WG Toasted Cheese Sandwich Mixed Vegetables Peaches Milk	<b>4</b> Egg Patty Sausage Patty ½ Bagel Vege. Baked Beans Pears Milk	<b>5</b> WG Cheeseburger Macaroni Casserole Green Beans Applesauce Milk	<b>6</b> WG Cheese Pizza Baby Carrots w/SunButter Dip Apple Milk	<b>7</b> Chicken Breast Tender on WG Roll Tater Tots Pineapple Milk
<b>10</b> Sloppy Joe on WG Roll Corn Mixed Fruit Milk	<b>11</b> WG French Toast Sticks Sausage Patty Vege. Baked Beans Peaches Milk	<b>12</b> Tuna Noodle Casserole w/WG Noodles Green Beans Pineapple Milk	<b>13</b> <b>EARLY RELEASE AT 12:00 PM</b> WG Cheese Pizza Baby Carrots w/SunButter Dip Apple Milk	<b>14</b> <b>PROFESSIONAL DAY</b> <b>NO SCHOOL</b>
<b>17</b> Ground Beef WG Soft Shell Tacos Cheddar Cheese Applesauce Milk	<b>18</b> Egg Patty Sausage Patty ½ WG Bagel Vege. Baked Beans Pears Milk	<b>19</b> WG American Chop Suey Green Beans Mixed Fruit Milk	<b>20</b> WG Cheese Pizza Baby Carrots w/SunButter Dip Apple Milk	<b>21</b> WG Chicken Nuggets Tater Tots Grapes Milk
<b>24</b> Hamburg in Gravy Mashed Potato Mixed Vegetables Pears Milk	<b>25</b> WG Pancakes Sausage Patty Vege. Baked Beans Pineapple Milk	<b>26</b> Chicken in Gravy WG Egg Noodles Peas Applesauce Milk	<b>27</b> WG Cheese Pizza Baby Carrots w/SunButter Dip Apple Milk	<b>28</b> Hamburger on WG Roll Tater Tots Banana Milk
<b>31</b> Hot Dog on WG Roll Tater Tots Applesauce Milk	<b>1</b> Egg Patty Sausage Patty Vege. Baked Beans Peaches Milk	<b>2</b> WG Pasta w/ Meat Sauce Green Beans Pears Milk	<b>3</b> WG Cheese Pizza Baby Carrots w/SunButter Dip Apple Milk	<b>4</b> WG Soft Shell Chicken Tacos Cheddar Cheese Mixed Vegetables Pineapple Milk

This institution is an equal opportunity provider. Menu is subject to change. A variety of milk is offered each day.

© 2024 Simply Good Food, LLC • [menufreedom.com](http://menufreedom.com)



**myschoolbucks.com**

[View Current Balances](#)  
[Receive low balance email alerts](#)  
[Add money to your student accounts](#)  
[Set It & Forget It... automatic payments](#)  
[Register for your FREE account today!](#)

A service of Heartland Payment Systems, Inc. A service fee is charged only when a payment is made.



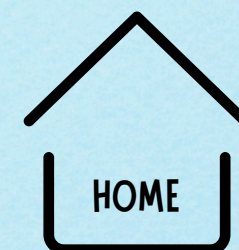


# HAPPY BIRTHDAY

Elina Cavo  
Murphie Hutchins  
Avaree Kennedy  
Kora Howell  
Paxton Cox  
Elias Leathers  
Sandra Gates  
Vivian Mitchell  
Sullivan Ouellette  
Sylvia Robertson  
Owen Bagley  
Eva Cyr

March 1  
March 5  
March 8  
March 10  
March 13  
March 16  
March 19  
March 23  
March 26  
March 27  
March 30  
March 30

Kindergarten  
First Grade  
First Grade  
Kindergarten  
First Grade  
Kindergarten  
Kindergarten  
First Grade  
PreK  
Kindergarten  
First Grade  
First Grade





# NEWSLETTER INCENTIVE

Last weeks' newsletter incentive winner is Parker French  
from Ms. Linscott's class!

**DON'T FORGET TO CLICK THE INCENTIVE LINK IN THE PRINCIPAL'S CORNER TO ENTER.**





Hello, RSU #63 Families!

I hope you all had a fantastic February vacation! March is focused on family and diversity. This week we continued to talk about goals. I read I Can Play It Safe in Kindergarten by Alison Feigh because of the snow day two Thursdays ago.

In Pre-K and 1st grade, we read a PowerPoint presentation on diversity and inclusion called All Are Welcome. The presentation talks about who is welcome at your table. We welcome people of all skin colors, cultures, languages, abilities, and beliefs. They each completed a coloring page. We did a Danny Go "Don't Stop Digging" movement break and ended class with a Go Noodle Weather the Storm meditation. I have added the links to the book, PowerPoint presentation, and activities I mentioned below.

If you have any questions or concerns, please contact me at [dsmith@rsu63.org](mailto:dsmith@rsu63.org).

Sincerely,

Dodie Smith, LMSW/CC

<https://www.youtube.com/watch?v=0Ln0dsSQ3i4>

<https://drive.google.com/file/d/1kI0szjDOfpCVVTf05N21VVApFCjMNnLzQ4/view?usp=sharing>

<https://www.youtube.com/watch?v=RTxYve-GwzM>

<https://www.youtube.com/watch?v=YCe-VVQbMVVhw>







CURRICULUM CORNER



February 24, 2025

In January our students completed a formative diagnostic assessment for Math and Reading. This is a very valuable tool for teachers and students. In last month’s Board Report I provided information on what the diagnostic is.

How do we use the results?

**Districtwide-** We are able to look at the data to see what percentage of students are performing on, above or below grade level in different domains of standards. This allows us to determine which set of standards we need to prioritize. We are using this data to help us set district goals and plan learning experiences for leaders and teachers while also using the data to adjust the curriculum. We will be analyzing how the implementation of the curriculum is going by comparing diagnostic data results from previous diagnostic assessments and making the appropriate adjustments in order to provide the best instruction for our students.

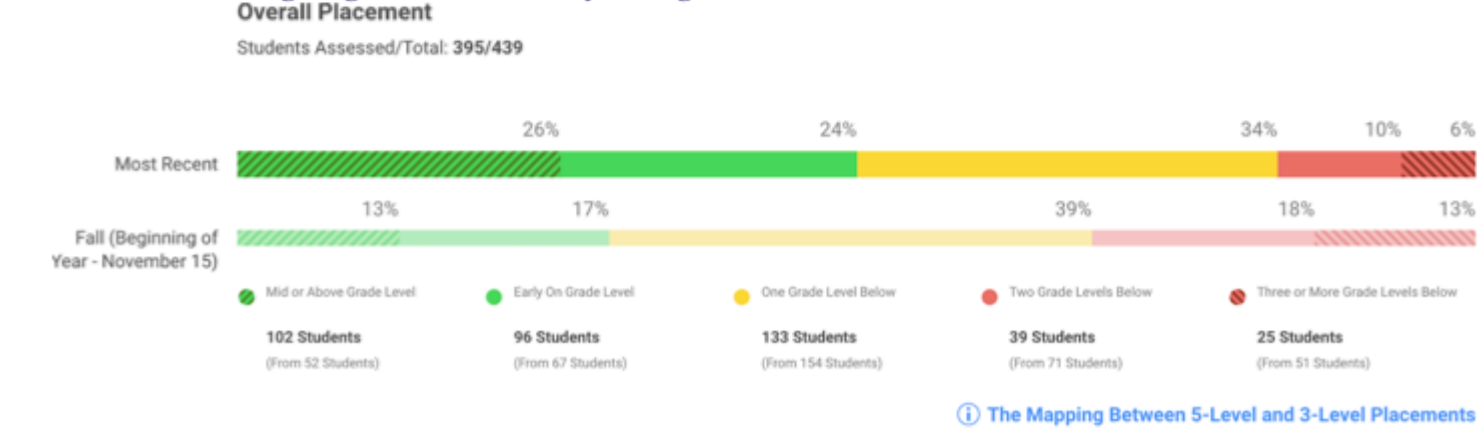
**Schoolwide-** We are able to look at the data to see what percentage of students are performing on, above or below grade level in different domains of standards. During grade level meetings we analyze how the implementation of the curriculum is going by comparing diagnostic data results from previous diagnostic assessments and identify bright spots as well as areas of focus. Schools/grade levels will be creating action plans using the data to improve growth for students. During grade level MTSS meetings the data is also used (with other points of data) as a data point to determine the need for Tier II/Tier III interventions as well as SPED referrals.

**In the classroom-** Each classroom teacher is able to look at the data to see what percentage of students are performing on, above or below grade level in different domains of standards. The program organizes students into groups based on the standards that have been identified as areas of focus and also provides lessons/activities for the teacher to use so they may provide explicit instruction for students in small groups or independently. The program provides resources to track student progress towards grade level proficiency of the standards.

We are very pleased with the results as they show our students have made great growth in both areas. Our students have made significant growth in both reading and math (see below).

Reading-

- In the fall 30% of our students scored at or above grade level. Now 50% of our students scored at or above grade level.
  - 31% of students in the Fall scored 2 or more grade levels below. Now only 16% of our students scored 2+ grade levels below.
  - One focus in Grades K-2 is to continue to increase Phonological Awareness and phonics skills.
- One focus in the higher grades is vocabulary strategies across content areas

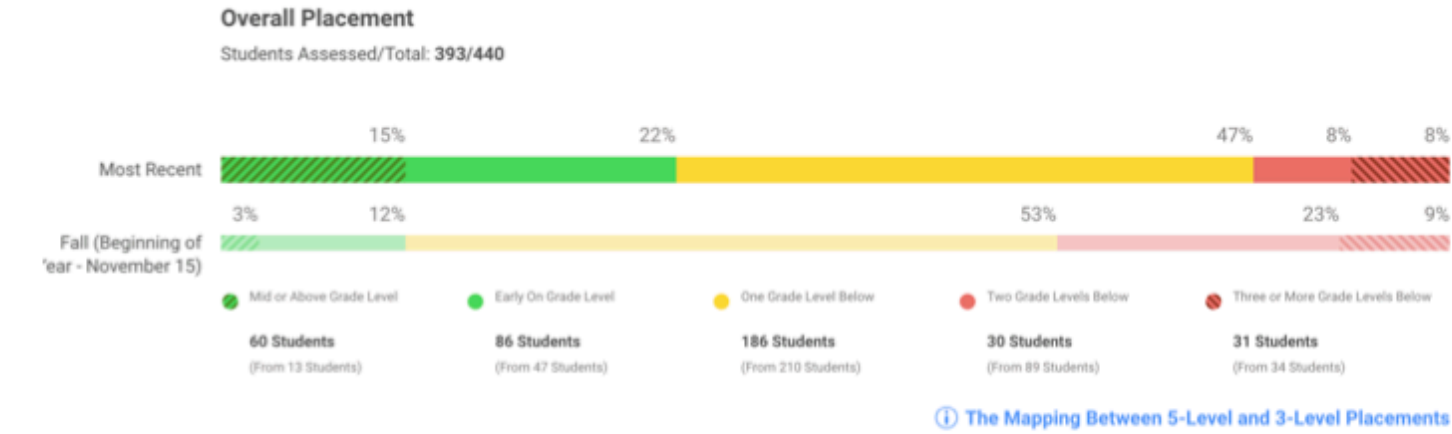


CURRICULUM CORNER



Math-

- In the fall 15% of our students scored at or above grade level. Now 37% of our students scored at or above grade level.
- 32% of students in the Fall scored 2 or more grade levels below. Now only 16% of our students scored 2+ grade levels below.
- One of our focuses is number sense skills based on the Number and Operations domain. Another focus is on math vocabulary strategies for students (integrating the reading domain results)



At Home:

The best thing you can do at home is read to your child, have them read to you or have them read independently nightly. Talk to your child about what they listened to/read, finding words in the text and asking them what they thought that meant. Having them experience a variety of fiction and informational text will help them a lot. For math count with your child forward and backward starting from any number 0-100 (especially the younger years), have them practice mental math facts by adding/subtracting objects at home (in K- 0-10, Gr. 1 0-20, Gr. 2 and higher double digit numbers). You could even create story problems for them to solve.

Thank you!  
Tina Dumond  
RSU #63 Director of Curriculum and Instruction  
RSU #63 Gifted and Talented Administrator  
RSU #63 McKinney-Vento Liaison  
[kdumond@rsu63.org](mailto:kdumond@rsu63.org) (207)843-7769 ext.129







# CONTACT INFORMATION

## EDDINGTON SCHOOL

843-6010

VISIT YOUR CLASSROOM'S FAMILY WEBPAGE!

**PRE-K**

**KINDERGARTEN**

**1ST GRADE**



## STAFF EMAILS

### Front Office

Mrs. McLean: [smclean@rsu63.org](mailto:smclean@rsu63.org)

Mrs. Smith: [kjsmith@rsu63.org](mailto:kjsmith@rsu63.org)

Nurse Bickford: [dbickford@rsu63.org](mailto:dbickford@rsu63.org)

### Classroom Teachers

#### Pre-K:

Ms. Leland: [aleland@rsu63.org](mailto:aleland@rsu63.org)

Mrs. Davis: [kdavis@rsu63.org](mailto:kdavis@rsu63.org)

#### Kindergarten:

Mrs. Alley: [jalley@rsu63.org](mailto:jalley@rsu63.org)

Mrs. DeRoche: [bderoche@rsu63.org](mailto:bderoche@rsu63.org)

Ms. Linscott: [klinscott@rsu63.org](mailto:klinscott@rsu63.org)

#### First Grade:

Mrs. Blake: [sblake@rsu63.org](mailto:sblake@rsu63.org)

Miss Geiser: [jgeiser@rsu63.org](mailto:jgeiser@rsu63.org)

Mrs. Perry: [aperry@rsu63.org](mailto:aperry@rsu63.org)

### Additional Services

Special Services: [crioux@rsu63.org](mailto:crioux@rsu63.org)

Speech Therapy: [kkaram@rsu63.org](mailto:kkaram@rsu63.org)

Occupational Therapy: [rhiggins@rsu63.org](mailto:rhiggins@rsu63.org)

Literacy Intervention: [astickle@rsu63.org](mailto:astickle@rsu63.org)

### Specialists

Art: [hallen@rsu63.org](mailto:hallen@rsu63.org)

PE: [msagehorn@rsu63.org](mailto:msagehorn@rsu63.org)

Music: [cstecher@rsu63.org](mailto:cstecher@rsu63.org)

Spanish: [mnorris@rsu63.org](mailto:mnorris@rsu63.org)

Library: [ablais@rsu63.org](mailto:ablais@rsu63.org)

School Counselor: [dsmith@rsu63.org](mailto:dsmith@rsu63.org)

